

# PLAYER MAP

Maximize win rate on your must-win projects with PROactive

- **Coaching:** live via webinar @ 60 minutes

- ✓ One-on-one with sales exec or with sales team

- 1. Project:** assess using Quali-5 criteria

- ✓ Quali-5 draft delivered to sales & management

- 2. Players:** build bridges and Player Plan

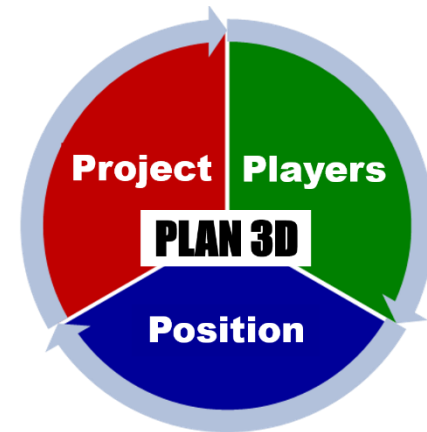
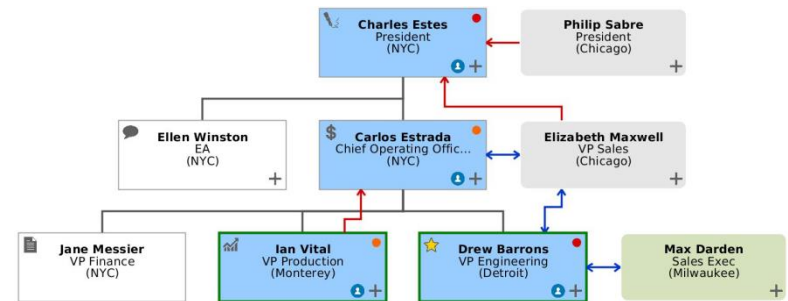
- ✓ Finetuned and shared with sales & management

- 3. Position:** strategize results + approach

- ✓ Written plan delivered to sales & management

- **Analysis:** review client, Player Map & plan

- ✓ Time we invest ensuring your plan is optimized



**Sell more sooner when you Player Map it**

If questions, ping us at [pmx@playermap.com](mailto:pmx@playermap.com) or 1.414.921.2550